



A: Zagrebačka 6, 10410 Velika Gorica

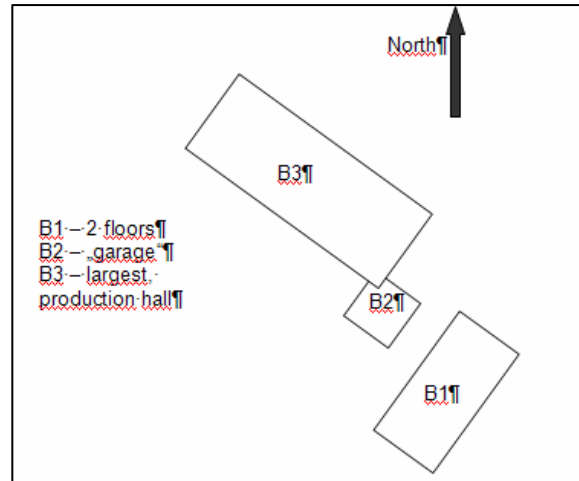
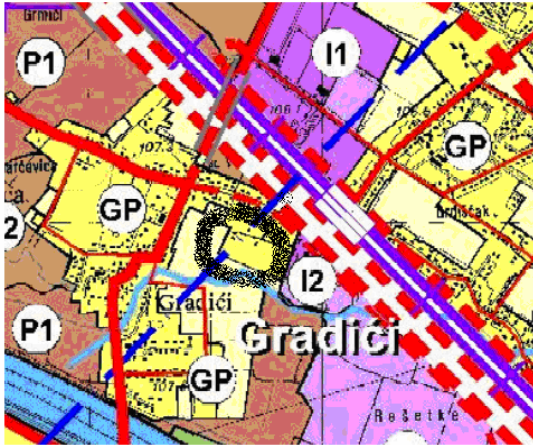
T: +385 1 6262 800

F: +385 1 6262 803

e-mail: info@poduzetnicki-centar.hr

Title (or descriptive title)		Gradići
Type and surface (m2)	<i>Land</i>	approx. 8.200m2
	<i>Production hall</i>	yes, 3 buildings with own boiler-room
	<i>Other</i>	
	Total surface	8.200m2
Purpose	<i>Description</i>	construction land
	<i>Spatial plan ciphre</i>	GP
Description	<i>Town</i>	Velika Gorica
	<i>Street and number</i>	Gradići
	<i>Description and surrounding</i>	Western outskirts of Velika Gorica, next to the railroad and to the motorway Zagreb-Sisak (in construction); entrance from the side-road, on the side-street, 100m from the main road - Kralja Tomislava (first 50m in asphalt and last 50m without), behind an existing entrepreneur (Grič)
	<i>In industrial zone?</i>	On the edges
	<i>In settlement?</i>	On the edges
	<i>Access roads</i>	yes, first 50m asphalted and second 50m no asphalted roads
Spatial planning documentation in order	<i>Spatial plan</i>	Yes (Velika Gorica)
	<i>Detailed and other planning documents</i>	no
Infrastructure	<i>Electricity</i>	yes
	<i>Water</i>	yes
	<i>Wastewater (drenage)</i>	yes
	<i>Gas</i>	no
	<i>Telephone</i>	yes
	<i>Noise</i>	from future motorway Zagreb-Sisak
Distance	<i>to motorway</i>	500m from future knot "Kosnica" - motorway Zagreb-Sisak
	<i>to railway</i>	200m for passengers and 2km for cargo
	<i>to airport</i>	4km
Surrounding: nearby enterprises and industries		Grič (company for equipping stores and buildings)
Ownership and contacts	<i>Name</i>	_____
	<i>Surname</i>	_____
	<i>Company</i>	_____
	<i>Contact person</i>	Upon request
	<i>Telephone</i>	_____
	<i>Mobile</i>	_____
Price	<i>EUR/m2</i>	Upon request
Reference	<i>Buildings</i>	3 buildings (approx. 2.500m2), structure of concrete and bricks, no facade, windows are in wood, and the doors are in sheet metal. One of the building has 2 floors, and upper floor is suitable for office rooms. Buildings are not connected with passes but the yard amount them is asphalted.
Reference 2	<i>Land</i>	Land and buildings are in legal action by creditors (Zagrebačka Banka d.d. and Hrvatska Poštanska Banka d.d). Expected bidding in june/july 2007.

The area in scope is roughly marked with black circle on the enclosed extract from the spatial plan (area by purpose). The red intermitted line marks the motorway Zagreb-Sisak in construction. The thick blue line marks the railroad, whereas the I2 area marks the industrial zone.



View from the access-road (2-floored building)



Building 1 and 2, view from the South (connecting yard)



Two photos from the same spot in the back yard: View North-East, building 1 – the rear entrances



View North-West, building 2 (the wall) and building 3 (entrance)

